



# Introduction

## Julian Holmes

## Angela Beaumont















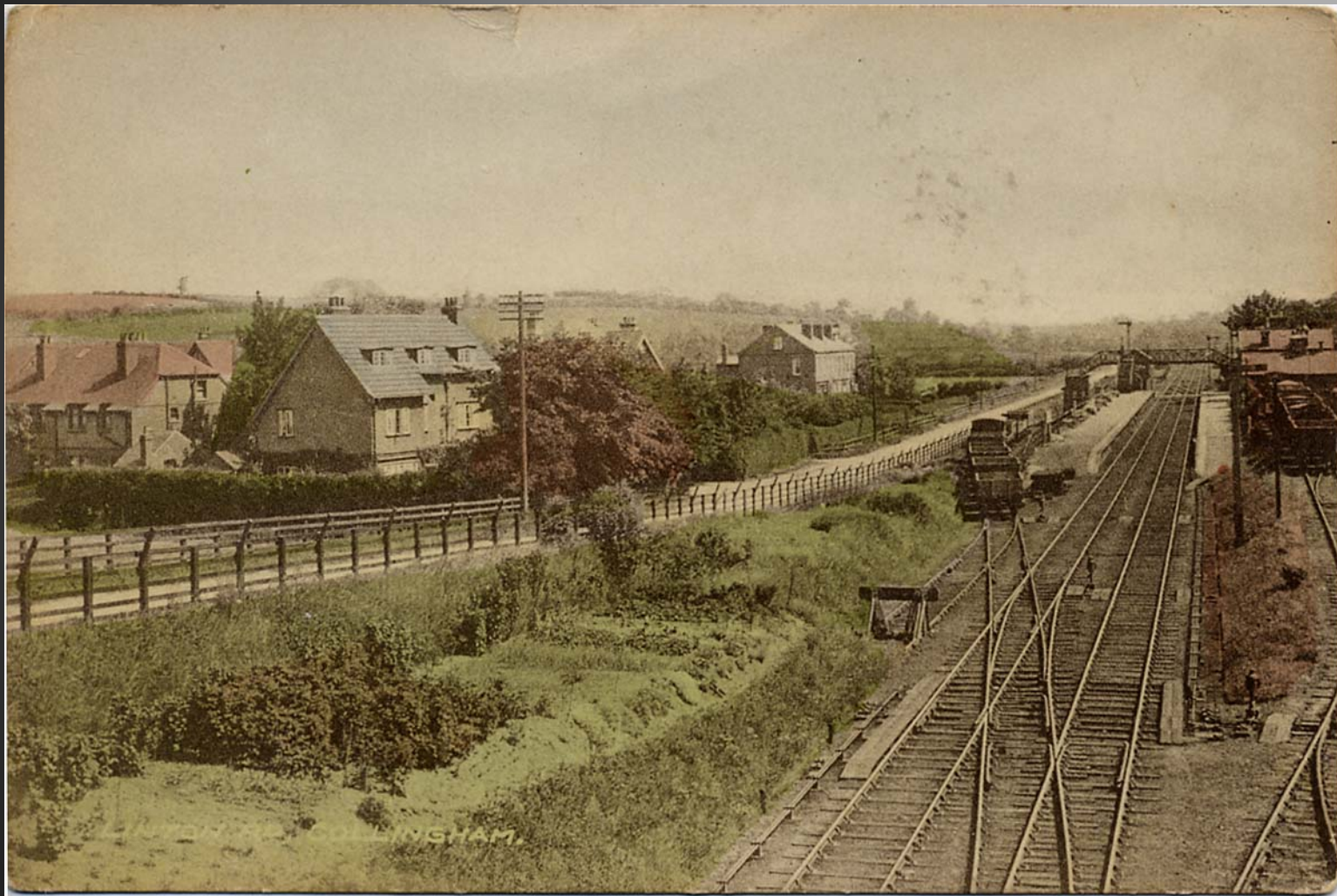




























# Introduction

## Julian Holmes

## Angela Beaumont



**Who knows what  
Town Planning is?**

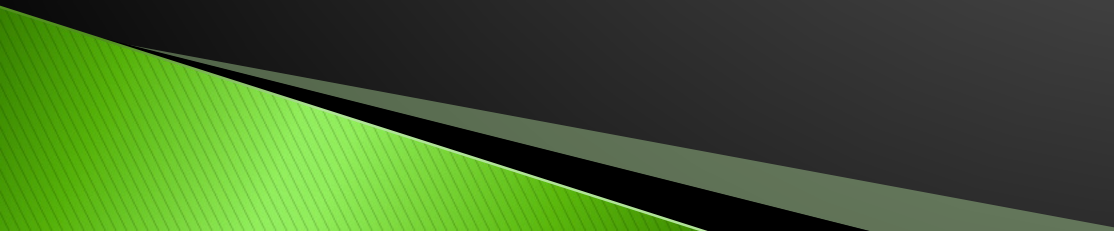
# What is Localism?



# Neighbourhood Planning

Neighbourhood planning allows people who live in towns and villages to come together and say where new houses, businesses and shops should be built.

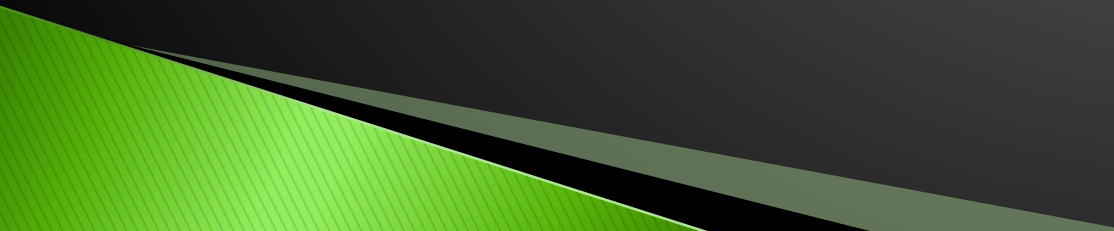
We can also decide what things should look like and what features would make the village a better place to live in.



# Why are we here today?

We are producing a Neighbourhood Plan to cover the next 15 years.

We want you to help us decide what to put in the Plan.





# Task 1

What do you like about Collingham?

# Task 2

What does Collingham need to make it a better place?

What could be improved?



# Task 3

What should we consider when trying to decide the best place for housing?

- The people who live and work here
- The natural features of the village – for example, hills, fields, rivers, trees
- The effects that houses might have on these things
- Anything else that we should think about?

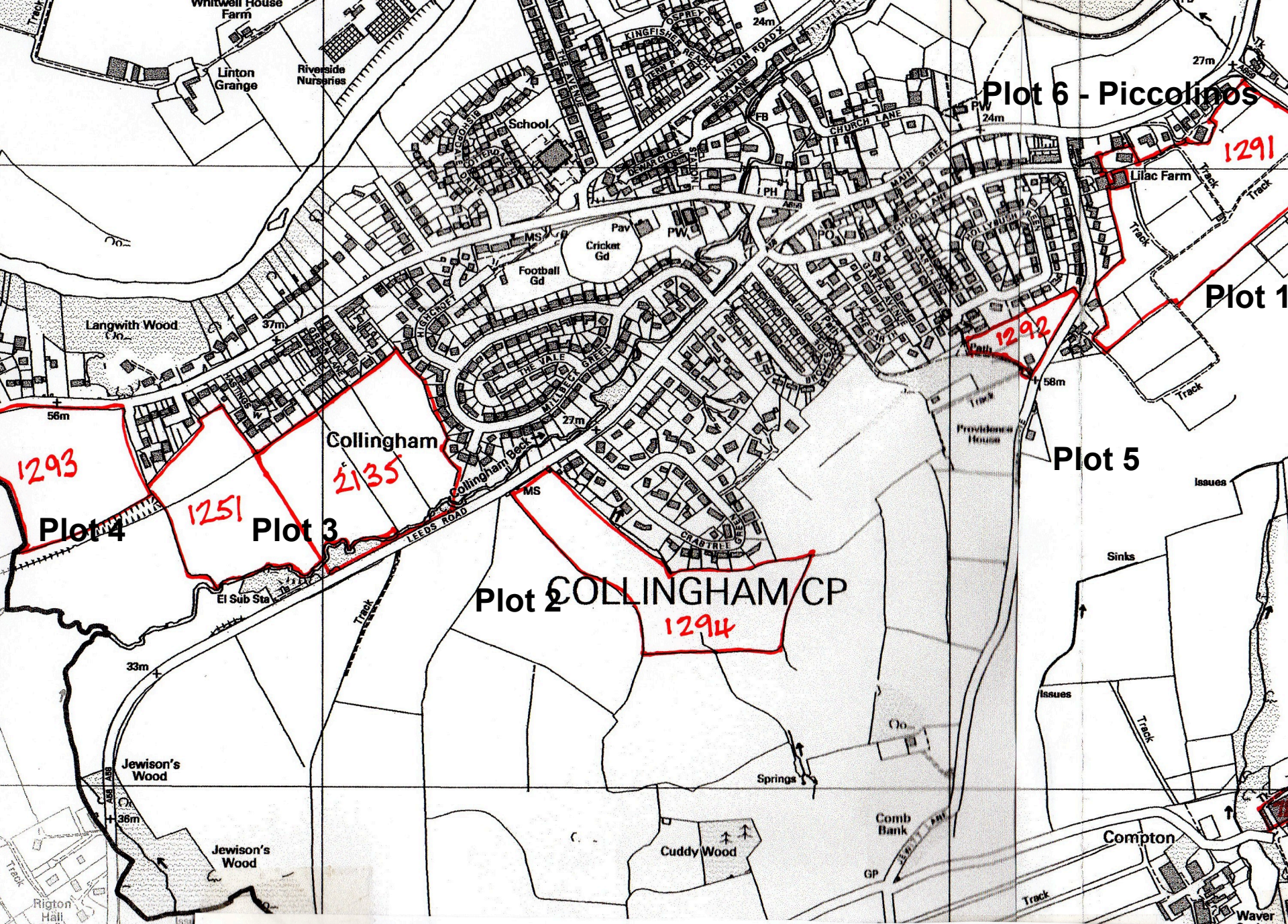
# Task 4

There are six possible housing plots in Collingham.  
What do you like about each? What do you dislike?

Which plot would be the best for housing?

- Use your answers from the previous tasks to see if they help you answer this difficult question.
- Could anything be done to make the plots better for housing?





Collingham with Linton Parish Coun



# Feedback Session

Have you enjoyed it?

Did you manage to agree the best place for houses?

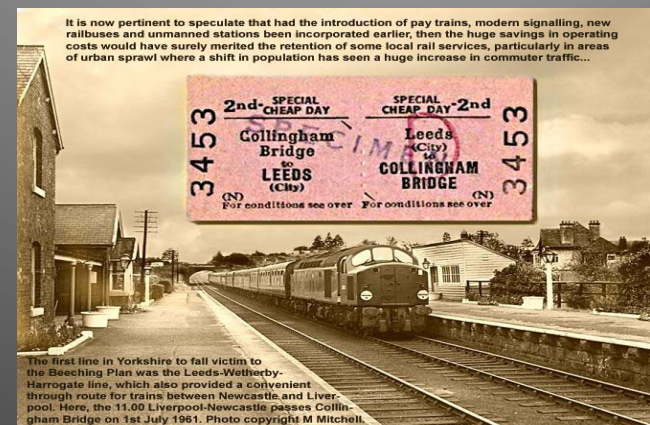
We will collect your ideas and take them to our Committee, so that they will help us develop the Plan.



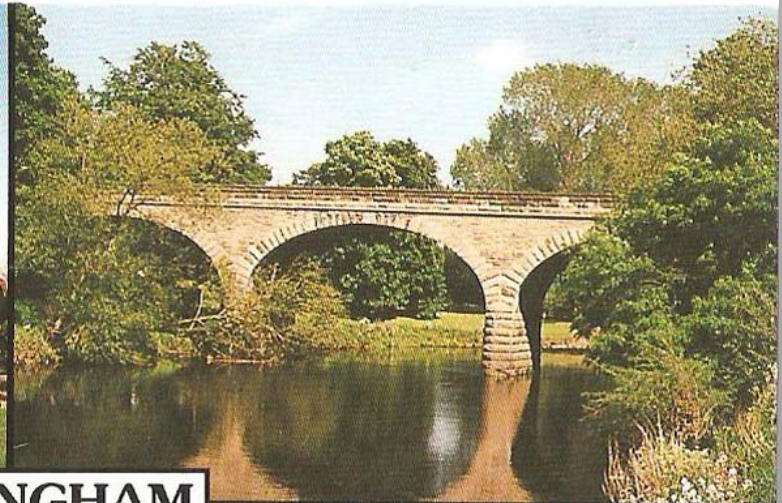


Thank you for helping to shape Collingham's future.

Any questions?







**COLLINGHAM**

