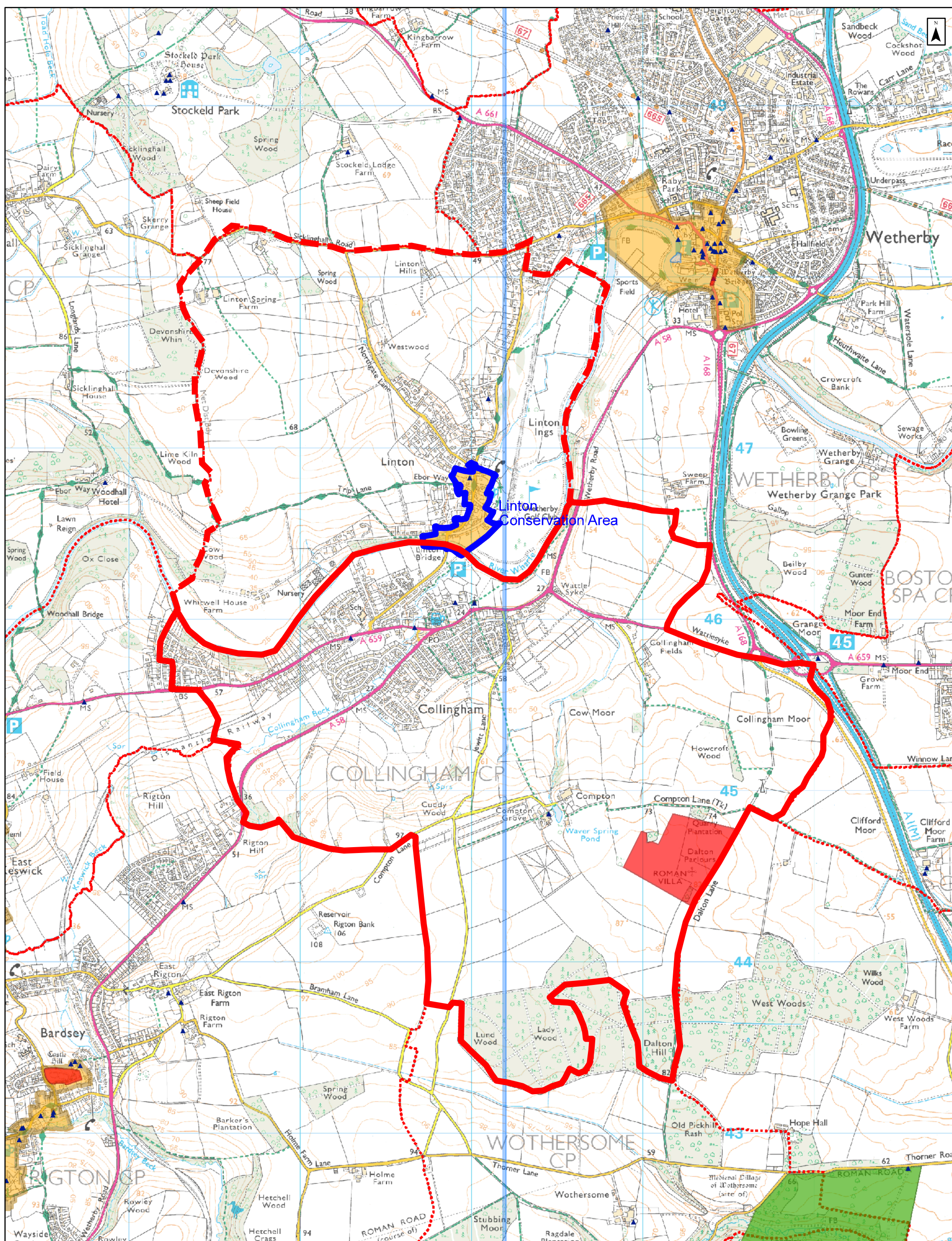


Collingham Neighbourhood Plan Boundary



Map Scale: 1:20,000
Print Date: 05 August 2015 11:42:31
Author: EHC1Broadwith

Notes: This map shows the boundary of the whole Parish; that part of the Parish outside the Neighbourhood Plan boundary is denoted in dashed line.

 Historic England
HistoricEngland.org.uk

Modern Ordnance Survey mapping: © Crown Copyright and database right 2015. All rights reserved. Ordnance Survey Licence number 100024900. Historic Ordnance Survey mapping: © and database right Crown Copyright and Landmark Information Group Ltd (All rights reserved 2015) Licence numbers 000394 and TP0024. Marine mapping: © British Crown and SeaZone Solutions Ltd 2015. All rights reserved. Product licence number 102006.006. © Historic England.
 This image is indicative and for internal use. It does not necessarily represent the extent of any development proposals and/or heritage assets and may be subject to distortions with measurements scaled from this map not matching measurements between corresponding indicators on the ground. It is not to be taken as a representation of any Historic England assessment.